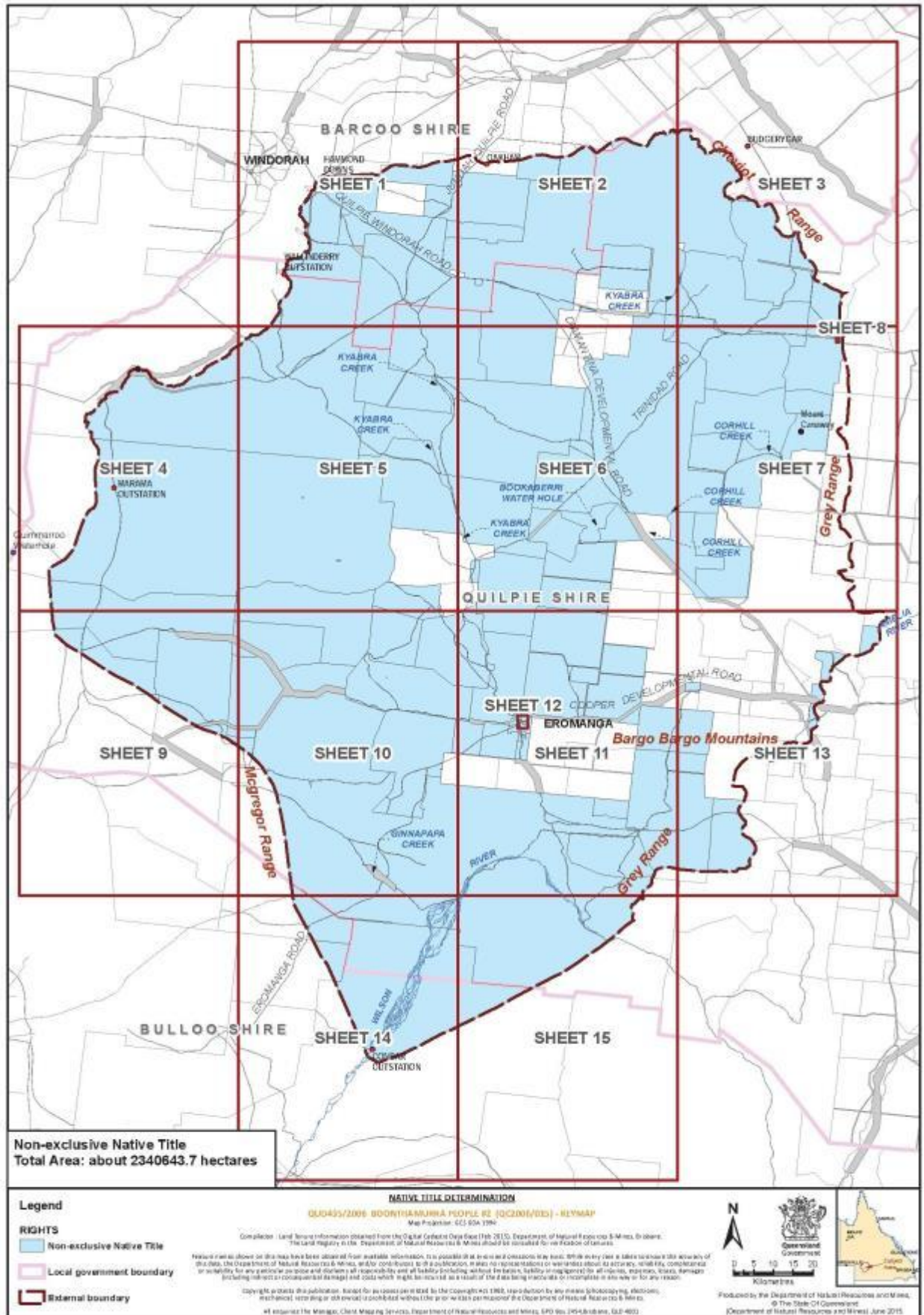
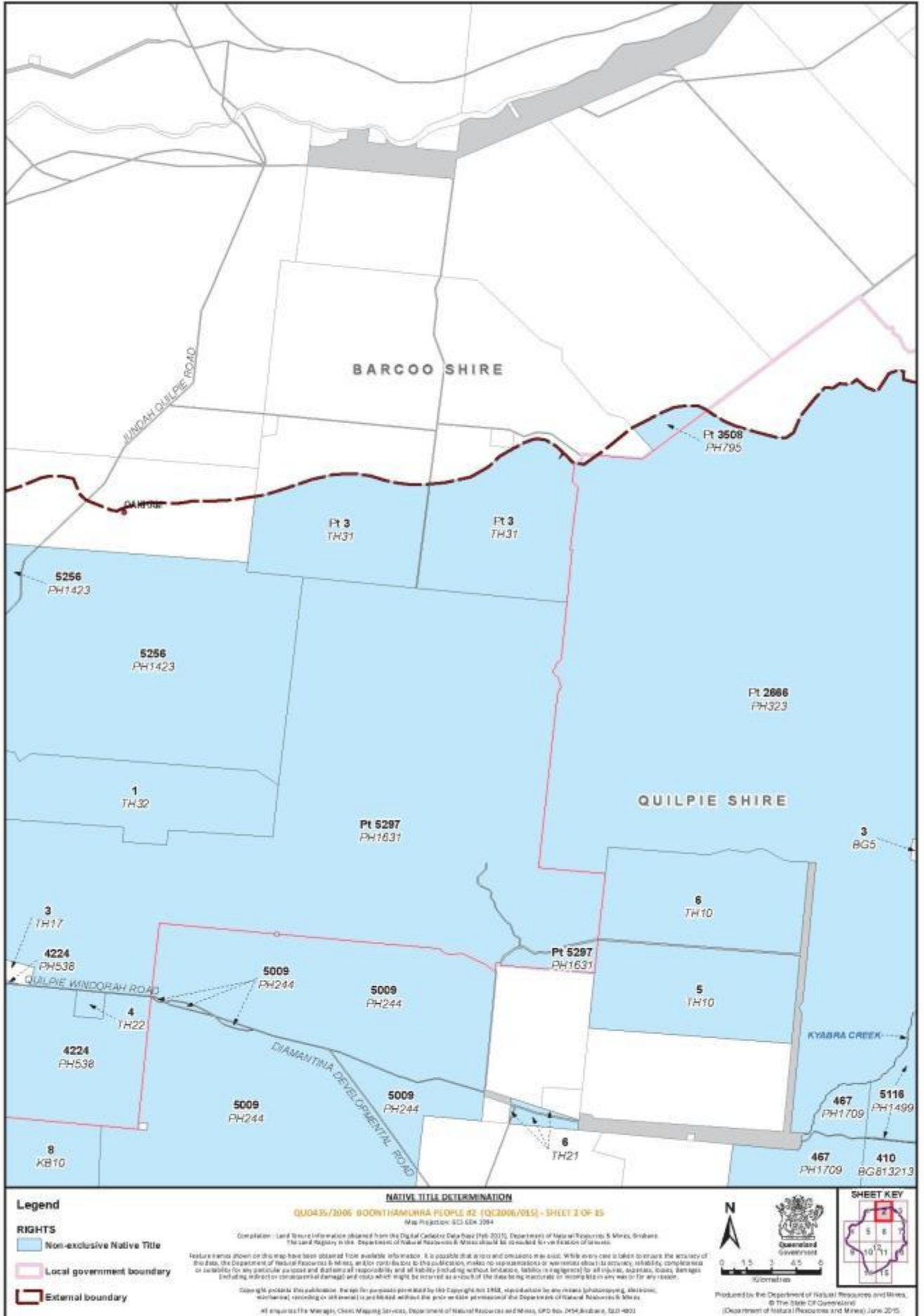
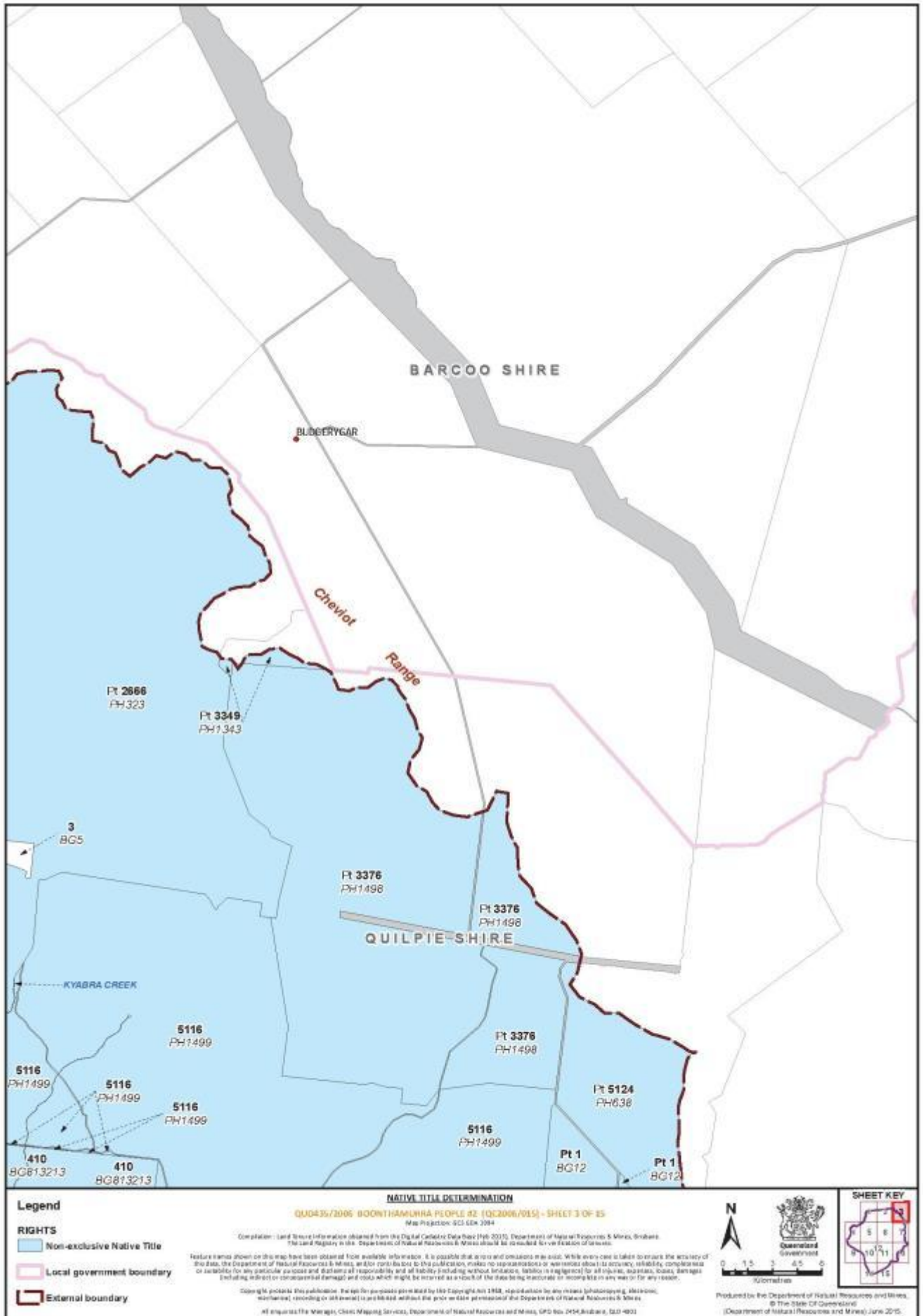


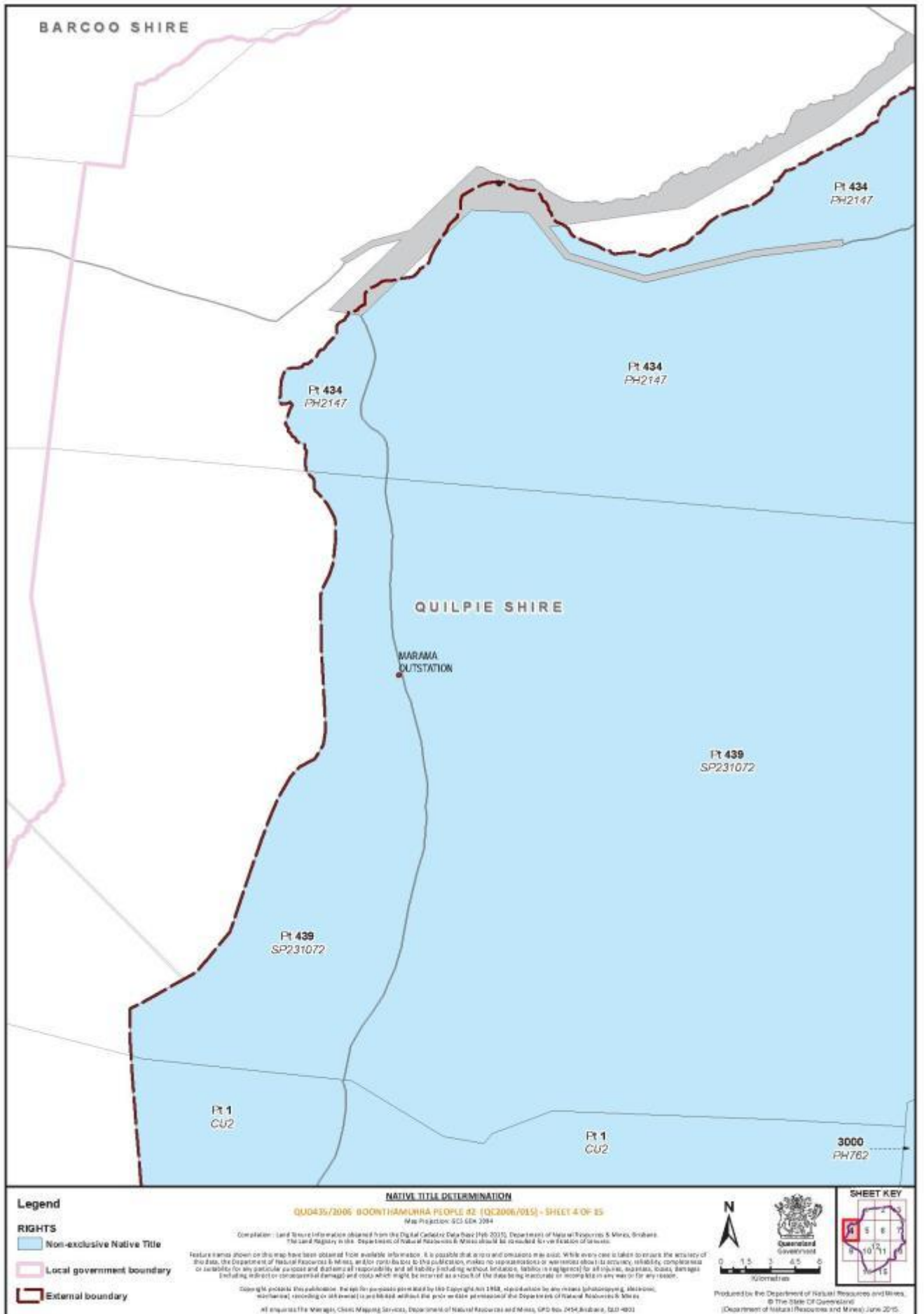
B. Map of Determination Area



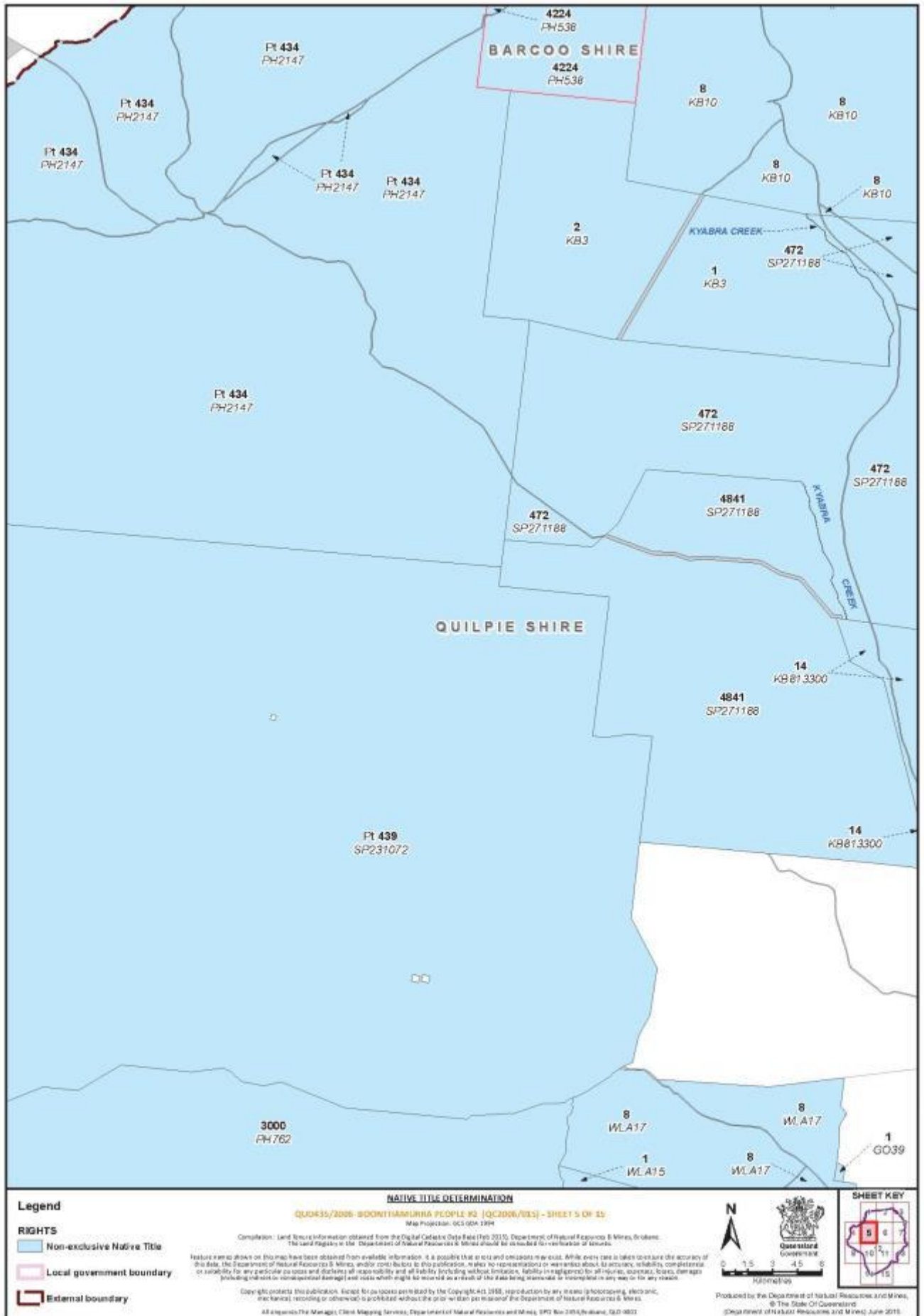


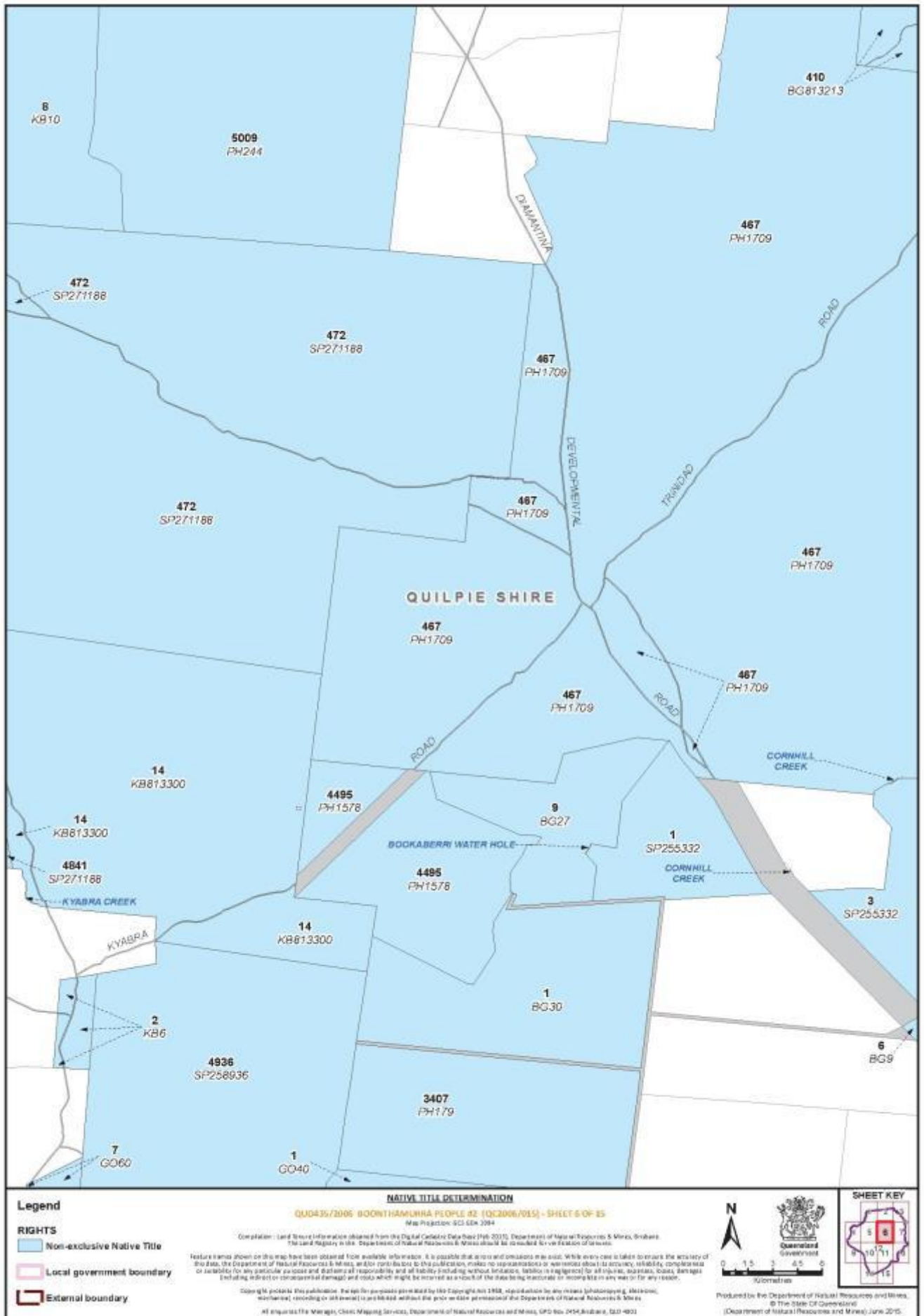
Document Path: K:\CLADMIN\MAP\Q435_15\Boonthamurra\Map\QCD2015_008_15_Boonthamurra_Determination_Map_NEW_Map_2015_03_18.mxd



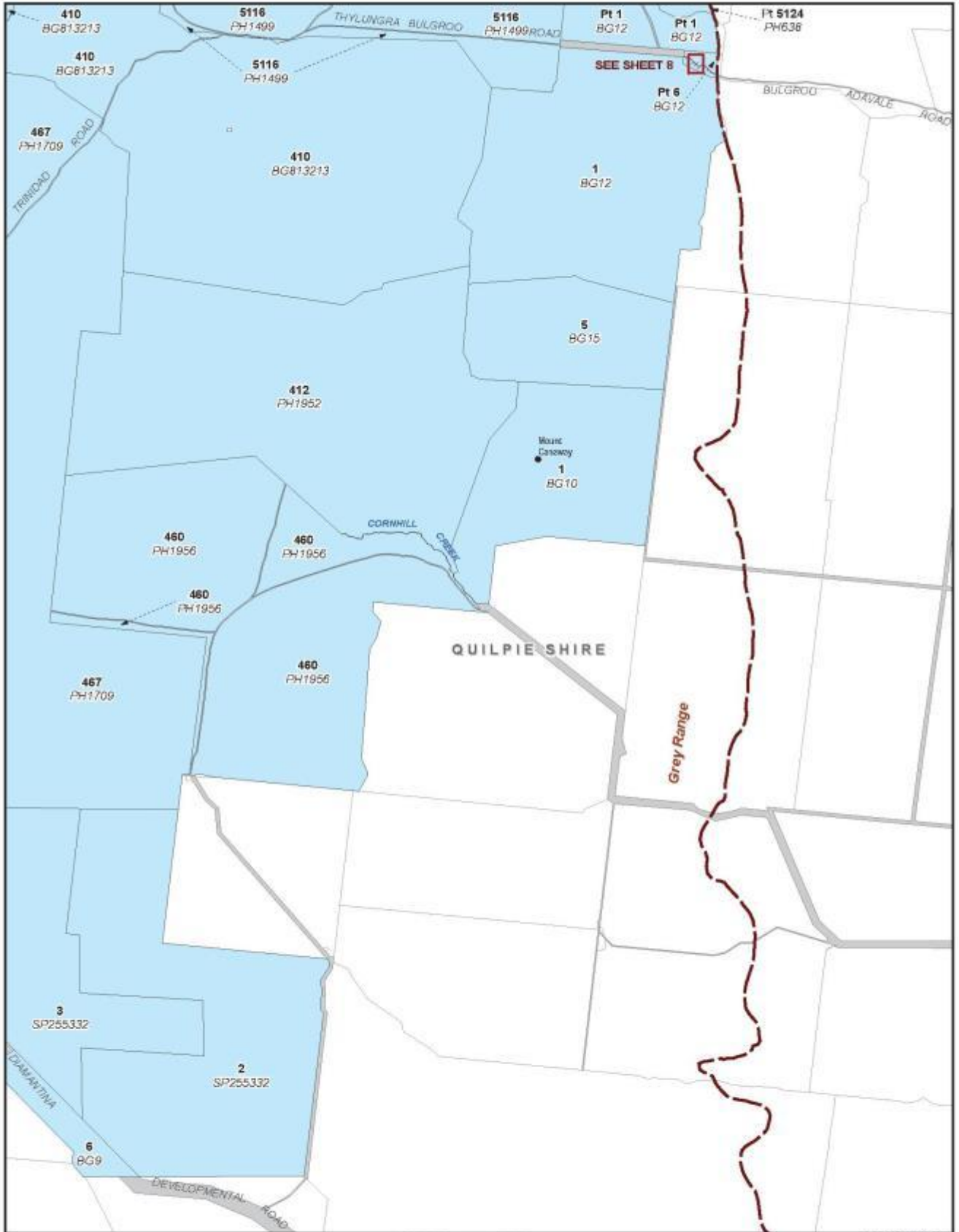


Document Path: K:\CLAIMMAP\Q066_15\Boonthamurra\Determination Map\Q066_15_Boonthamurra_Determination_Map_NEW_2015_03_18.mxd





Document Path: K:\CLA\MMAP\Q06_15\Boonthamurra\Determination Map\Q06_15_Boonthamurra_Determination_Map_NEW_2015_03_18.mxd



- Legend**
- RIGHTS**
- Non-exclusive Native Title
 - Local government boundary
 - External boundary

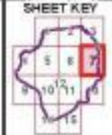
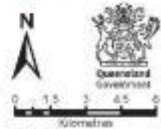
NATIVE TITLE DETERMINATION
 QUD435/2005 BOONTHAMURRA PEOPLE 02 (QCD2006/015) - SHEET 7 OF 15
 Map Projection: GCS GDA 2004

Compilation: Land tenure information obtained from the Digital Cadastral Data Base (2015), Department of Natural Resources & Mines, Brisbane. The Land Registry in the Department of Natural Resources & Mines should be consulted for verification of interests.

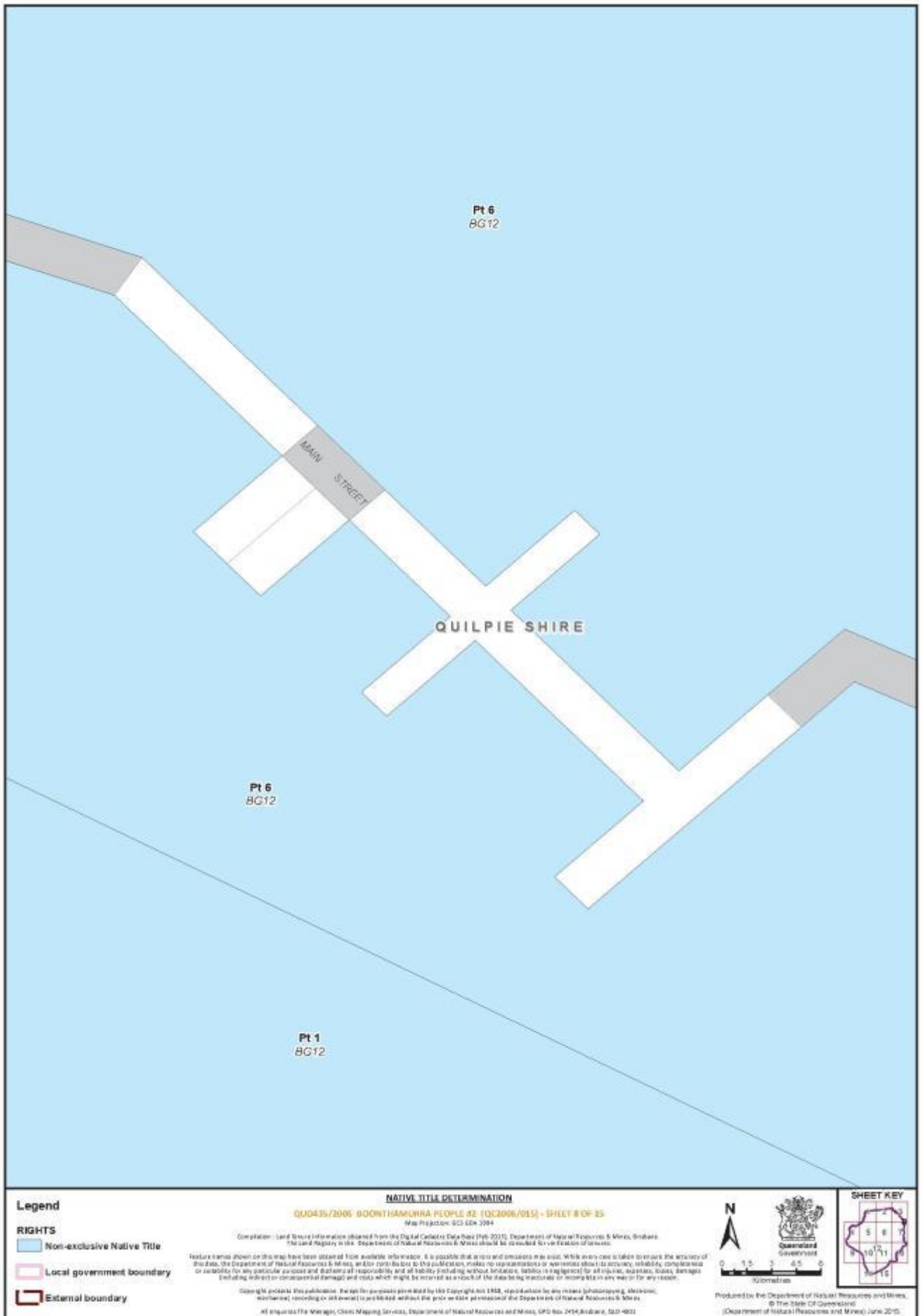
Feature names shown on this map have been obtained from available information. It is possible that errors and omissions may exist. While every care is taken to ensure the accuracy of this data, the Department of Natural Resources & Mines, and its contractors, make no representations or warranties about its accuracy, reliability, completeness or suitability for any particular purpose and disclaim all responsibility and all liability (including without limitation, liability in negligence) for all claims, damages, losses, or expenses (including indirect or consequential damage) and costs which might be incurred as a result of the data being inaccurate or incomplete in any way or for any reason.

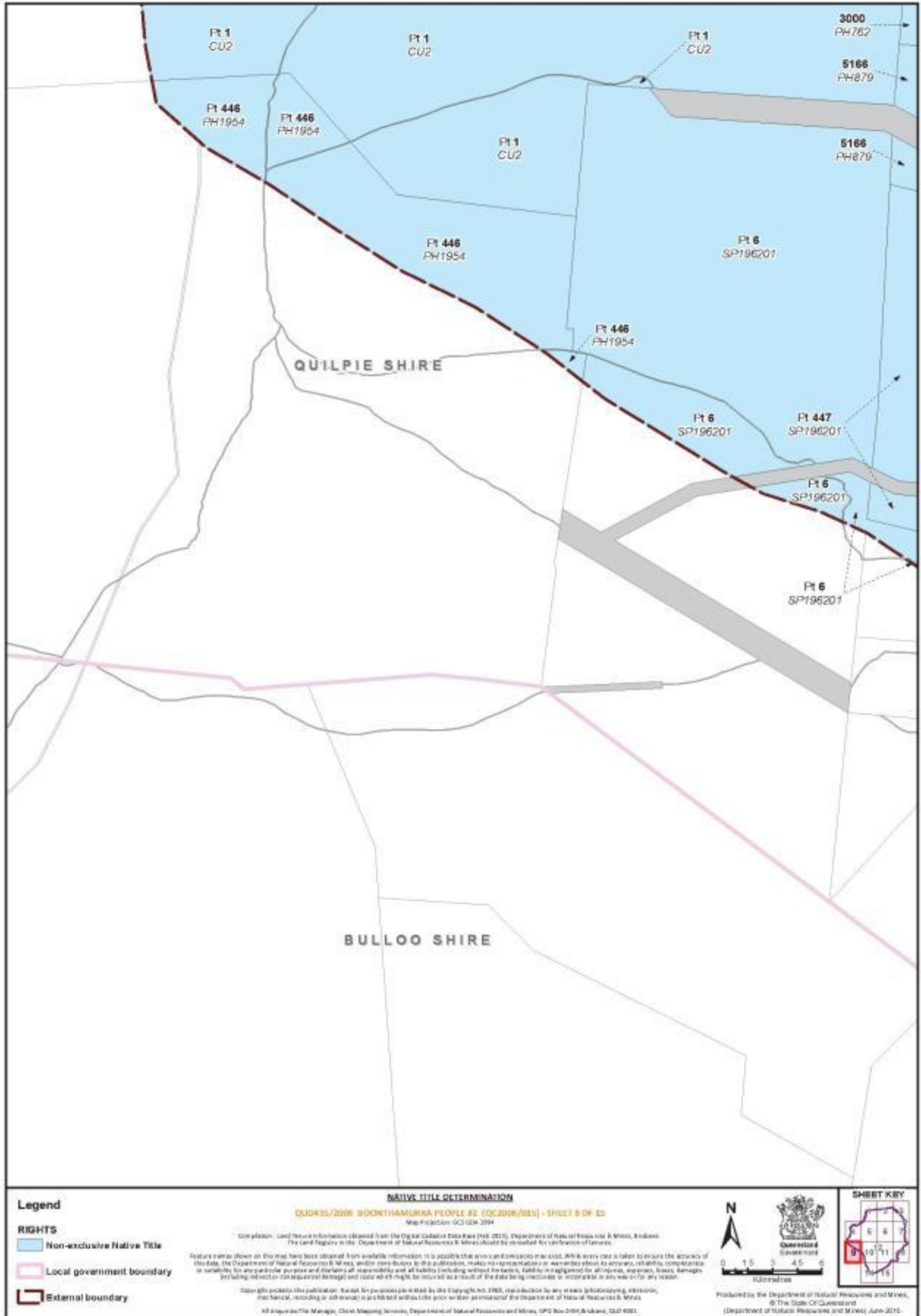
Copyright protects this publication. The copyright is owned by the Copyright Act 1968, reproduced by any means (photocopying, electronic, mechanical, recording or otherwise) is prohibited without the prior written permission of the Department of Natural Resources & Mines.

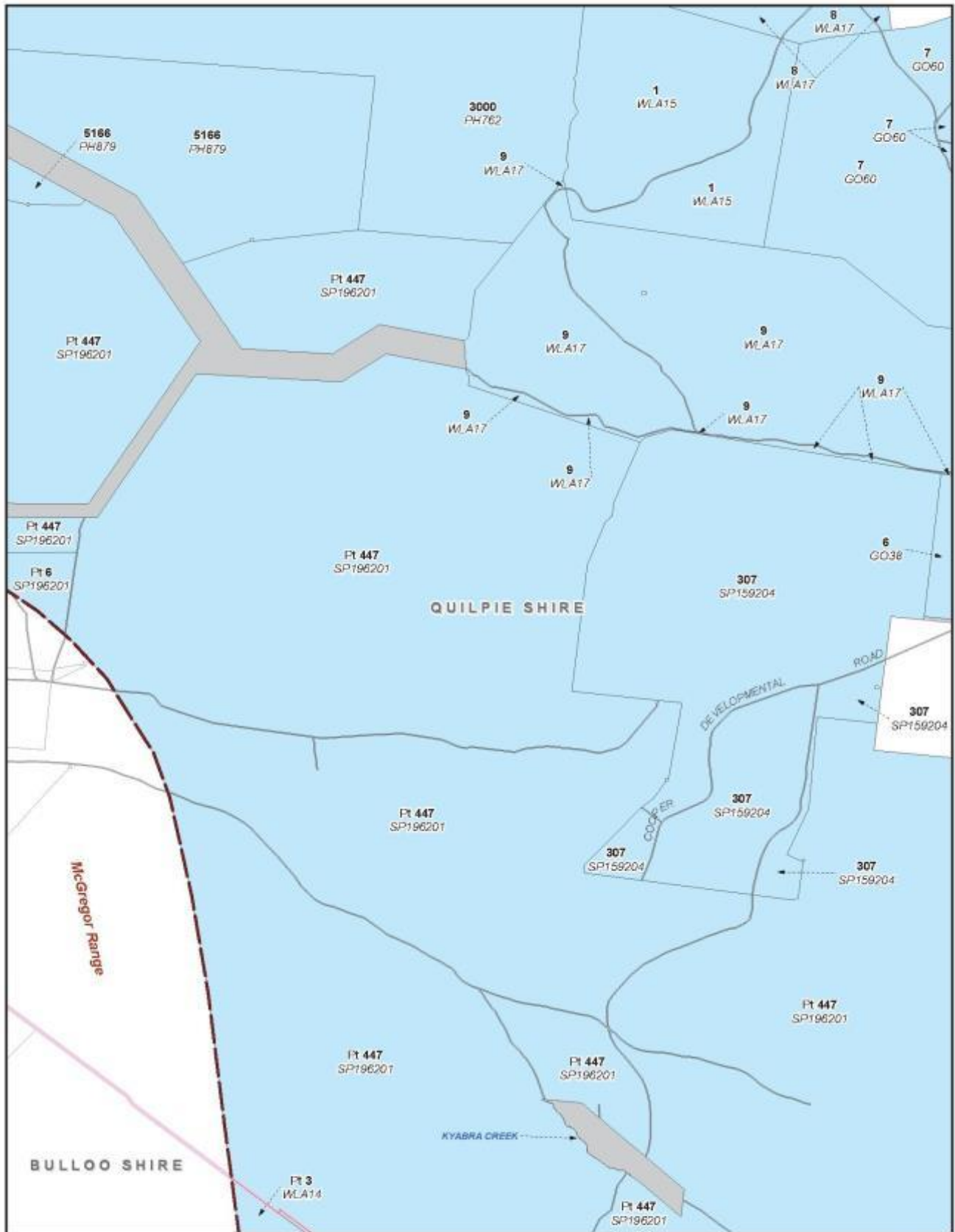
All enquiries to the Manager, Cadastral Mapping Services, Department of Natural Resources and Mines, GPO Box 2454 Brisbane, QLD 4001



Produced by the Department of Natural Resources and Mines,
 © The State of Queensland
 (Department of Natural Resources and Mines) June 2015.







Legend

RIGHTS

- Non-exclusive Native Title
- Local government boundary
- External boundary

NATIVE TITLE DETERMINATION

QUD435/2006 BOONITHAMURRA PEOPLE R2 (QC2006/BL5) - SHEET 10 OF 15

Map Projection: GCS GDA 1984

Compilation: Land title information obtained from the Digital Cadastre Data Base (Feb 2010), Department of Natural Resources & Mines, Brisbane. The Land Registry in the Department of Natural Resources & Mines should be consulted for verification of details.

Features shown above on this map have been obtained from available information. It is possible that errors and omissions may exist. While every care is taken to ensure the accuracy of this data, the Department of Natural Resources & Mines, and/or contractors to this publication, makes no representations or warranties about its accuracy, reliability, completeness or suitability for any particular purpose and disclaims all responsibility and all liability (including without limitation, liability in negligence) for all injuries, damages, losses, claims, compensation or consequential damages and costs which might be incurred as a result of the data being determined or incorporated in any way or for any reason.

Copyright protects this publication. Except for extracts permitted by the Copyright Act 1968, reproduction by any means (photocopying, electronic, mechanical), recording or otherwise is prohibited without the prior written permission of the Department of Natural Resources & Mines.

All enquiries to: Manager, Client Mapping Services, Department of Natural Resources and Mines, SP2 Box 2464, Brisbane, QLD 4001

N

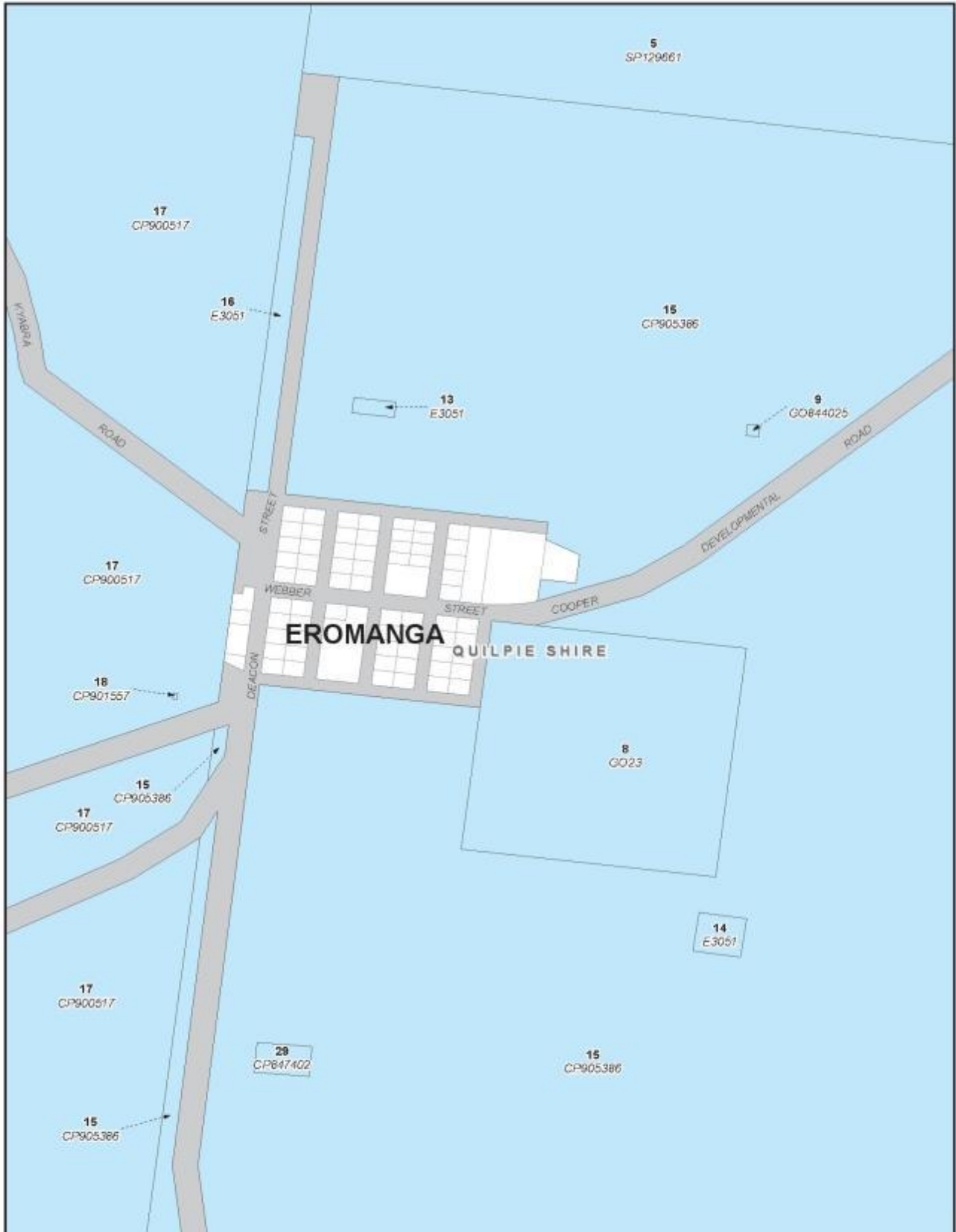
0 1.5 3 4.5 6

Kilometres

Produced by the Department of Natural Resources and Mines,
 © The State Of Queensland
 (Department of Natural Resources and Mines) June 2011

SHEET KEY

Document Path: K:\CLADMAP\Qcd6_15\Boonithamura Determination Map\QCD6_15_Boonithamura Determination Map_NEW_2015_03_18.mxd



Document Path: K:\CLAIMMAP\Qcd6_15\boonthamurra Determination Map\QCD6_15_boonthamurra Determination Map_NEW_2015_03_18.mxd

NATIVE TITLE DETERMINATION
 QU6435/2006 BOONTHAMURRA PEOPLE 92 (QC2006/095) - SHEET 22 OF 35
 Map Projection: GCS 554 2004

Legend

RIGHTS

- Non-exclusive Native Title
- Local government boundary
- External boundary

Completion: Land Rights Information obtained from the Digital Cadastral Data Base (DCDB 2013), Department of Natural Resources & Mines, Brisbane. The Land Registry in the Department of Natural Resources & Mines should be consulted for verification of tenures.

Native title shown on this map has been obtained from available information. It is possible that errors and omissions may exist. While every care is taken to ensure the accuracy of this data, the Department of Natural Resources & Mines, and its contractors, do not accept any liability for any errors or omissions and disclaims all responsibility and all liability (including without limitation, liability in negligence) for all claims, damages, losses, and rights (including indirect or consequential damages) and costs which might be incurred as a result of the data being inaccurate or incomplete in any way or for any reason.

Copyright notices: This publication is made for purposes permitted by the Copyright Act 1968, reproduction by any means by photocopying, electronic means, recording or otherwise is prohibited without the prior written permission of the Department of Natural Resources & Mines. All rights reserved. The Manager, Client Mapping Services, Department of Natural Resources and Mines, GPO Box 2424, Brisbane, QLD 4002.

Kilometres

Queensland Government

SHEET KEY

Produced by the Department of Natural Resources and Mines, © The State of Queensland (Department of Natural Resources and Mines) June 2015.



Document Path: K:\CLAIMMAP\Qcd6_15\boonthamurra Determination Map\QCD6_15_boonthamurra Determination Map_NEW_2015_03_18.mxd

NATIVE TITLE DETERMINATION
 QCD435/2006 BOONTHAMURRA PEOPLE 92 (DC2006/095) - SHEET 13 OF 15
 Map Projection: GCS 1984 UTM

Legend

RIGHTS

- Non-exclusive Native Title
- Local government boundary
- External boundary

Generation - Land title information obtained from the Digital Cadastral Data Base (P48 2013), Department of Natural Resources & Mines, Brisbane. The Land Registry in the Department of Natural Resources & Mines should be consulted for verification of details.

Native title shown on this map has been obtained from available information. It is possible that errors and omissions may exist. While every care is taken to ensure the accuracy of this data, the Department of Natural Resources & Mines, and its contractors in the publication, make no representation or warranty about its accuracy, reliability, completeness or suitability for any particular purpose and disclaims all responsibility and all liability (including without limitation, liability in negligence) for all claims, damages, losses, expenses (including indirect or consequential damage) and costs which might be incurred as a result of the data being inaccurate or incomplete in any way or for any reason.

Copyright notices: This publication, in whole or in part, is prohibited by the Copyright Act 1968, reproduction by any means (photocopying, electronic, mechanical, recording or otherwise) is prohibited without the prior written permission of the Department of Natural Resources & Mines.

All rights reserved. Client Mapping Services, Department of Natural Resources and Mines, GPO Box 2624, Brisbane, QLD 4002

N

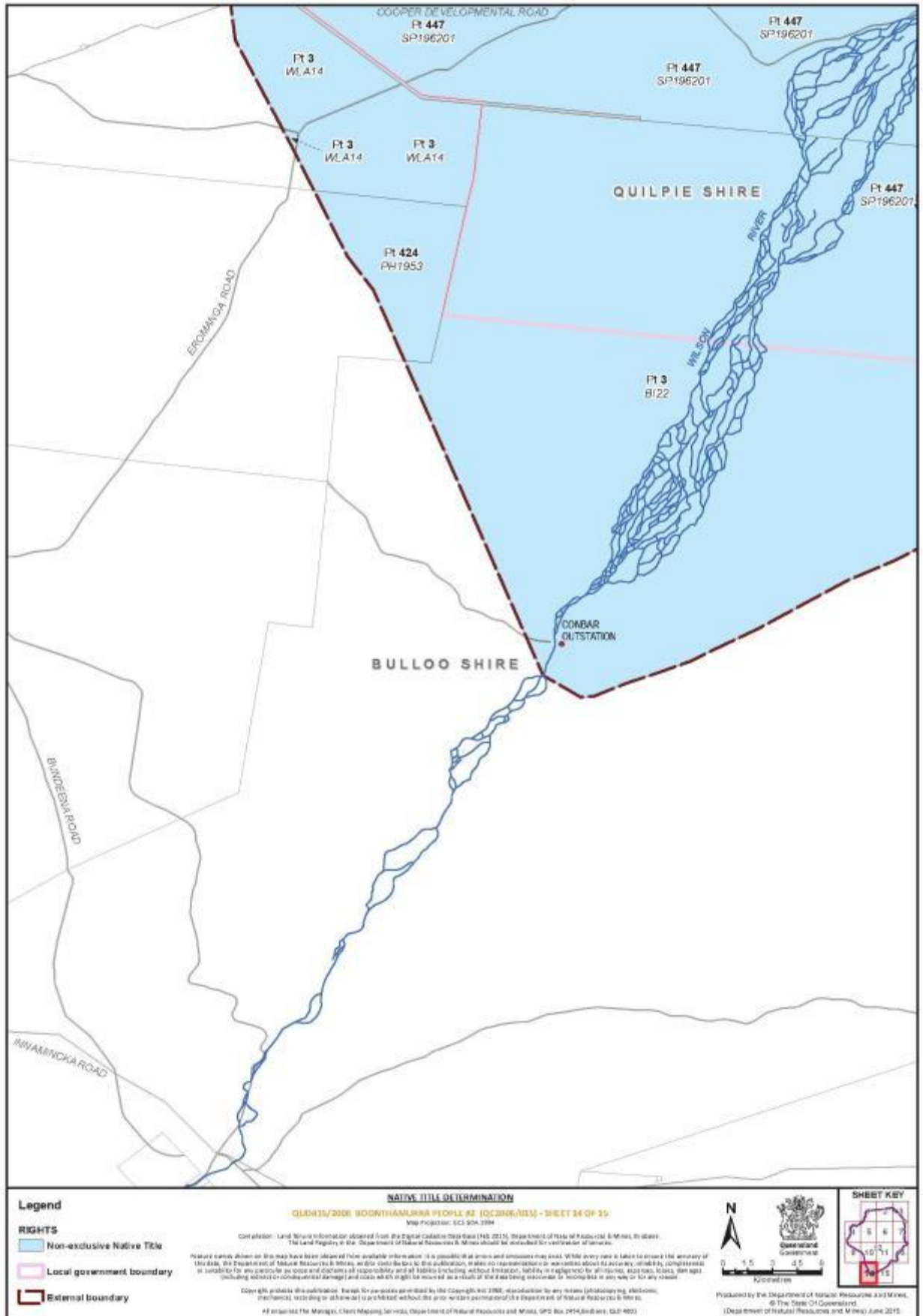
0 1.5 3 4.5 6
Kilometres

Produced by the Department of Natural Resources and Mines,
 © The State of Queensland
 (Department of Natural Resources and Mines) June 2015

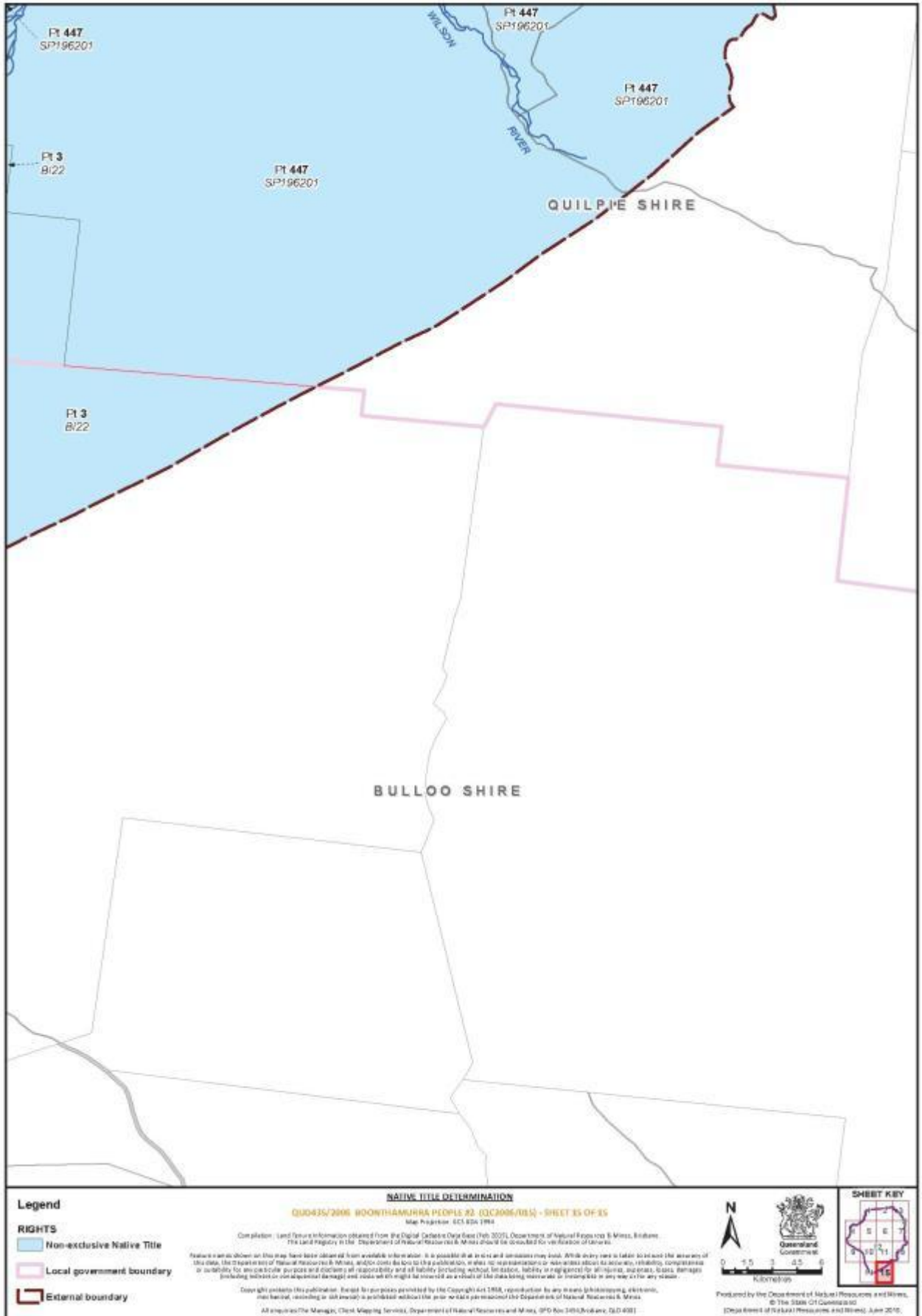
SHEET KEY

8	9	10
10	11	12

13



Document Path: K:\CLADMMAP\Q06_15_Boonthamarras\Determinations\Map\QCD15_Boonthamarras_Determination_Map_NEW_2015_03_18.nxd



Document Path: K:\CLAMM\AP\Q006_15\Boonhamurra\Determination Map\QCD06_15_Boonhamurra_Determination_Map_NEW_2015_03_18.mxd